



dhrealty partners inc

COMMERCIAL PROPERTIES

Brokerage • Management • Investments • Accounting



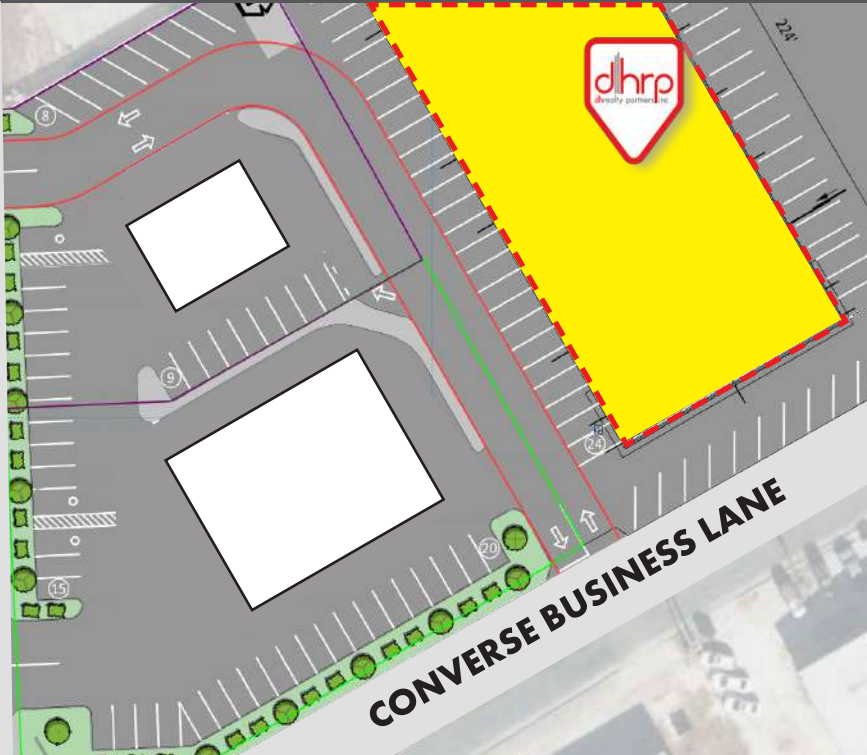
Michael D. Hoover
210.218.9095
hoover@dhrp.us

CONVERSE BUSINESS PARK

9150 FM 78 | Converse, TX 78109

Bulk Warehouse with Fenced Yard - 22,888 SF of Warehouse
with 35,000 SF of Fenced Yard

FARM TO MARKET 78
21,923 VPN

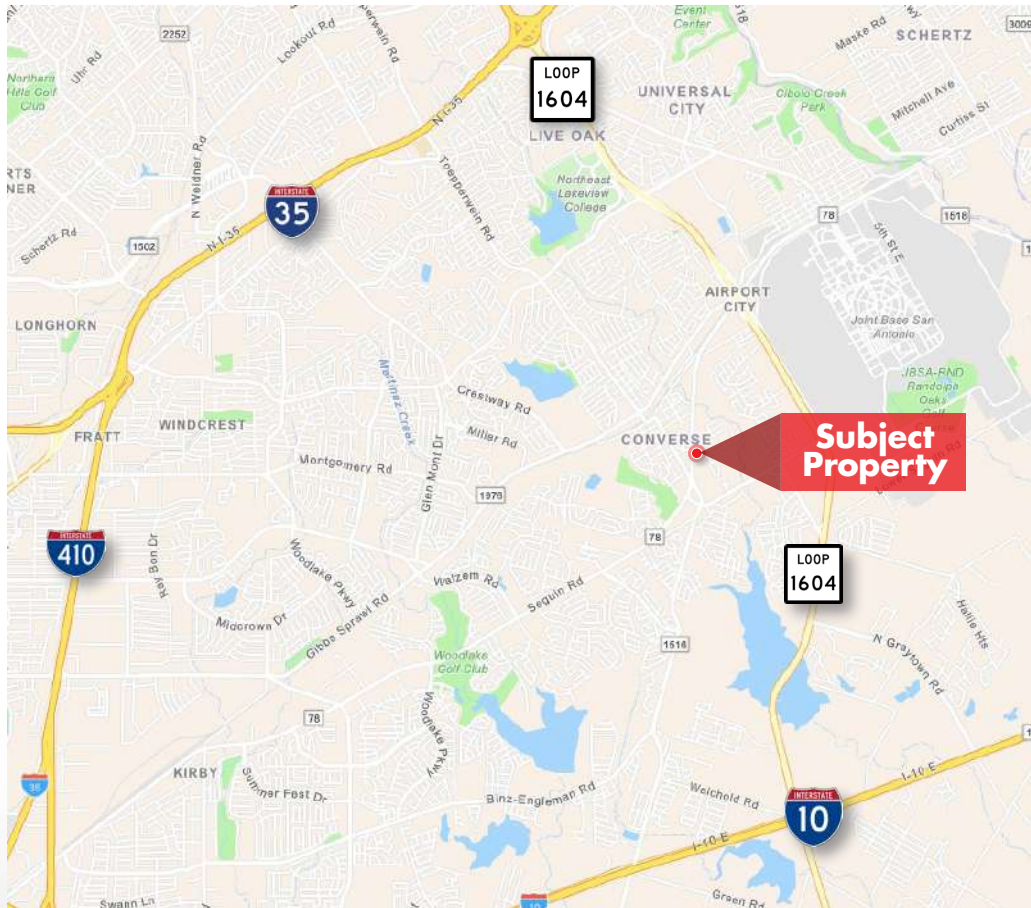


FOR LEASE

CONVERSE BUSINESS PARK

9150 FM 78 | Converse, TX 78109

Bulk Warehouse with Fenced Yard - 22,888 SF of Warehouse with 35,000 SF of Fenced Yard



LOCATION

Property is located at FM 78 and Converse Business Lane in Converse, Texas.

HIGHLIGHTS

- **Proposed rebranding of building 2**
- Fully gated and fenced
- Grade level overhead doors
- Site will accommodate 18-wheeler turn around/deliveries
- Will be delivered as warm shell
- 35,000 SF of fenced yard
- 600A/3 phase power
- All utilities available
- Easy access to Loop 1604
- Located in the rapidly developing city of Converse

CEILING HEIGHT

15'

LEASE TERM

5-year minimum

ZONING

I-1, City of Converse

LEASE RATE

\$14/SF/YR + NNN

BUILDING SIZE

Warehouse: ±22,888 SF

Proposed Fenced Yard: ±35,000 SF

The information herein was obtained from sources deemed reliable; however, DH Realty Partners, Inc. makes no guarantees, warranties, or representations as to the completeness of accuracy thereof. The presentation of this property is submitted subject to errors, omissions, changes of price, prior to sale or lease, or withdrawal without notice. All Floor plans, property lines, areas, and dimensions are approximate and for illustration purposes only. DHRP | DH Realty Partners, Inc. ©2024. A Texas Corporation.

CONVERSE BUSINESS PARK

9150 FM 78 | Converse, TX 78109

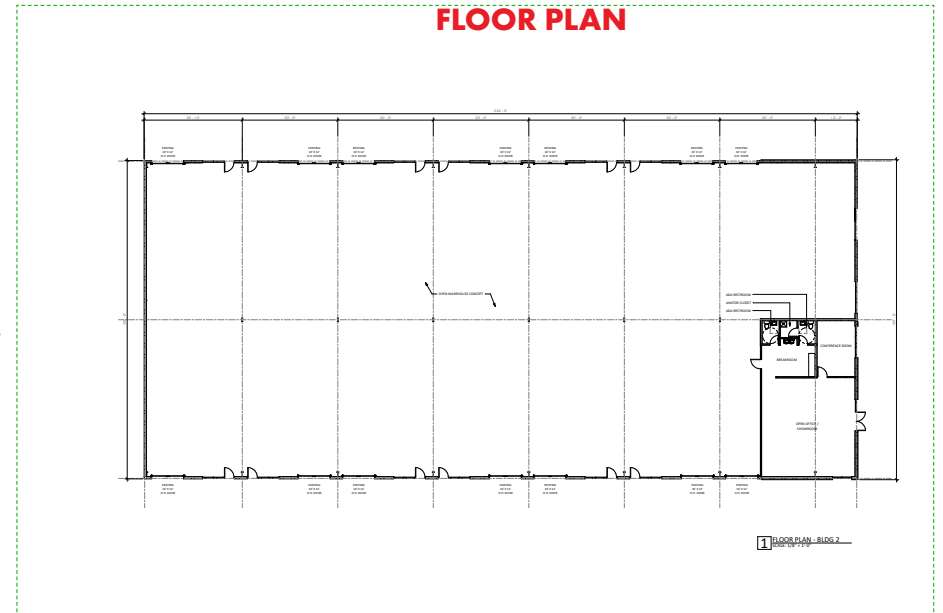
**Bulk Warehouse with Fenced Yard - 22,888 SF of Warehouse
with 35,000 SF of Fenced Yard**

PROPOSED SITE PLANS

BUILDING PERSPECTIVE



FLOOR PLAN



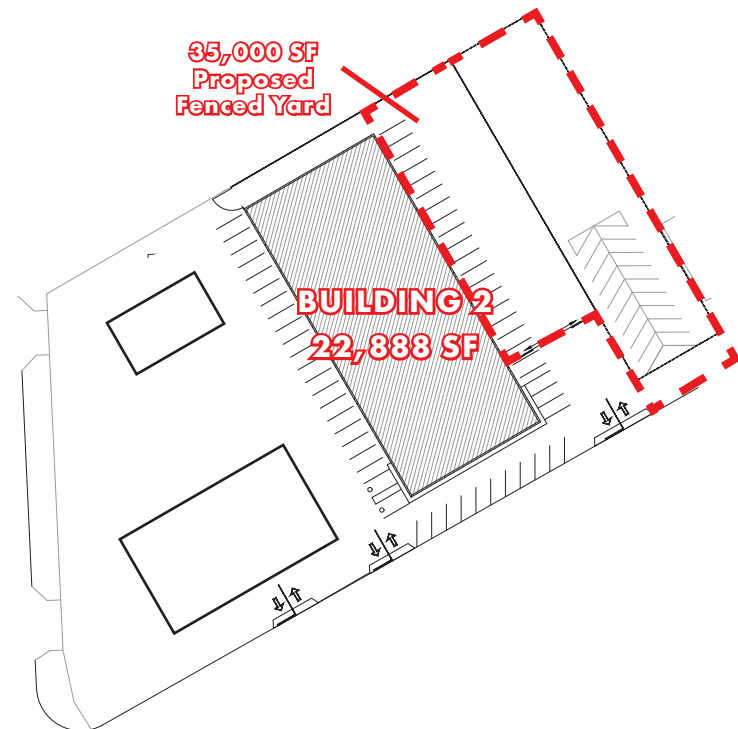
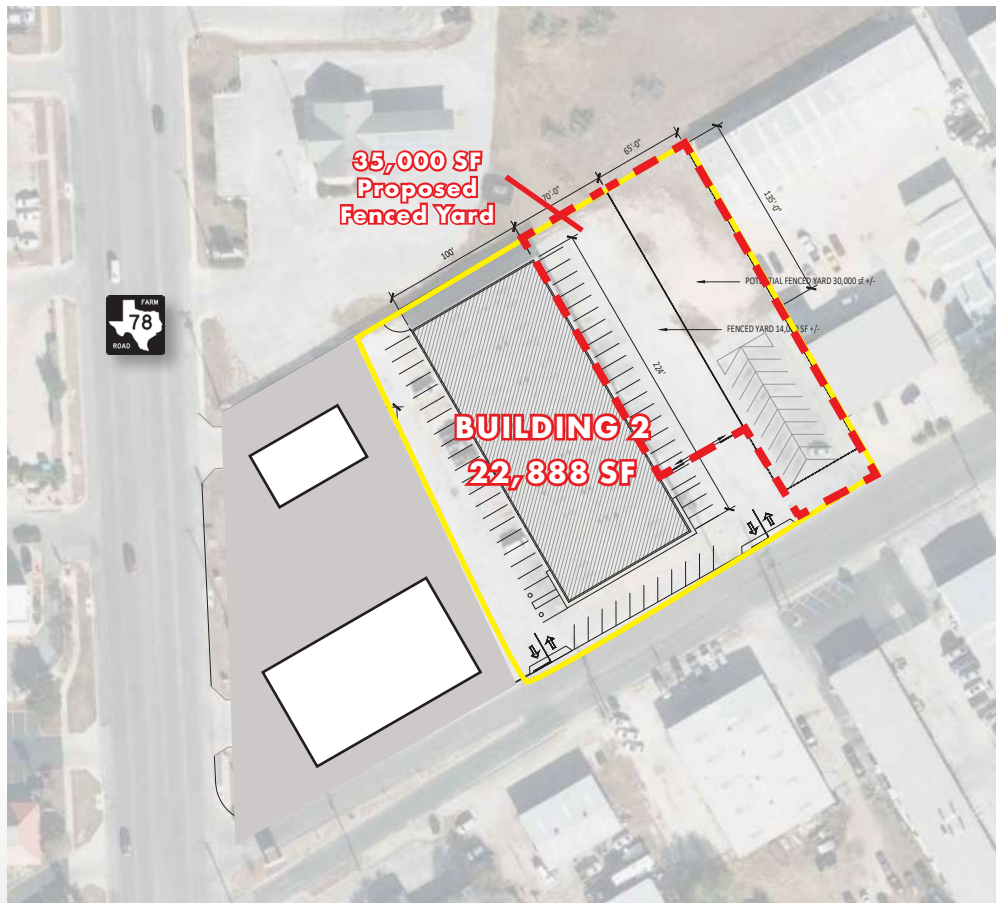
The information herein was obtained from sources deemed reliable; however, DH Realty Partners, Inc. makes no guarantees, warranties, or representations as to the completeness of accuracy thereof. The presentation of this property is submitted subject to errors, omissions, changes of price, prior to sale or lease, or withdrawal without notice. All Floor plans, property lines, areas, and dimensions are approximate and for illustration purposes only. DHRP | DH Realty Partners, Inc. ©2024. A Texas Corporation.

CONVERSE BUSINESS PARK

9150 FM 78 | Converse, TX 78109

**Bulk Warehouse with Fenced Yard - 22,888 SF of Warehouse
with 35,000 SF of Fenced Yard**

SITE PLAN



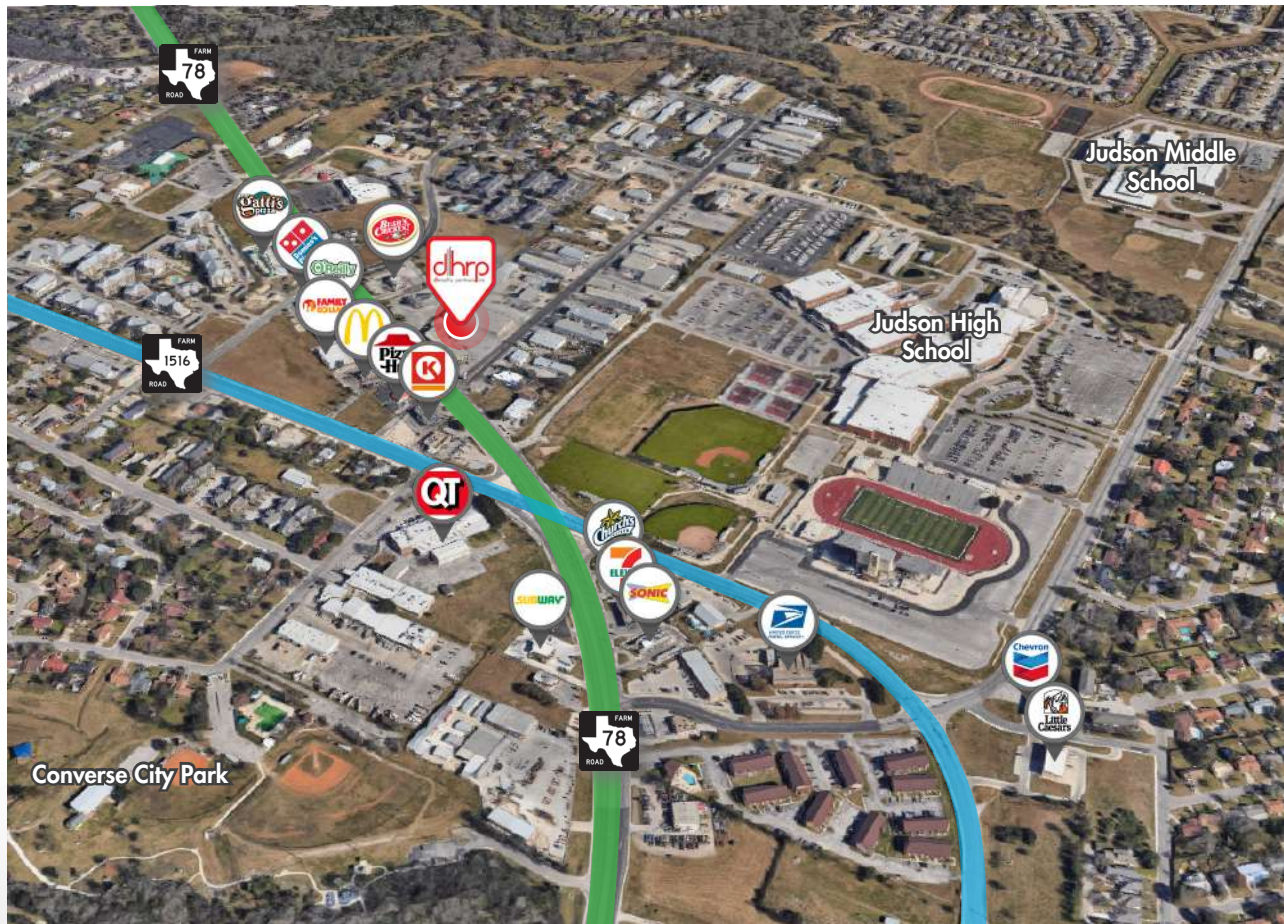
The information herein was obtained from sources deemed reliable; however, DH Realty Partners, Inc. makes no guarantees, warranties, or representations as to the completeness of accuracy thereof. The presentation of this property is submitted subject to errors, omissions, changes of price, prior to sale or lease, or withdrawal without notice. All floor plans, property lines, areas, and dimensions are approximate and for illustration purposes only. DHRP | DH Realty Partners, Inc. ©2024. A Texas Corporation.

CONVERSE BUSINESS PARK

9150 FM 78 | Converse, TX 78109

**Bulk Warehouse with Fenced Yard - 22,888 SF of Warehouse
with 35,000 SF of Fenced Yard**

AERIAL MAP



POINTS OF INTEREST

- Bush's Chicken
- Mr. Gatti's Pizza (Coming Soon)
- Domino's Pizza
- O'Reilly Auto Parts
- Family Dollar
- McDonald's
- Pizza Hut
- Circle K
- QuikTrip (Coming Soon)
- Subway
- Converse City Park
- Church's Chicken
- 7-Eleven
- Sonic
- United States Postal Service
- Chevron
- Little Caesar's
- Judson High School
- Judson Middle School

The information herein was obtained from sources deemed reliable; however, DH Realty Partners, Inc. makes no guarantees, warranties, or representations as to the completeness of accuracy thereof. The presentation of this property is submitted subject to errors, omissions, changes of price, prior to sale or lease, or withdrawal without notice. All Floor plans, property lines, areas, and dimensions are approximate and for illustration purposes only. DHRP | DH Realty Partners, Inc. ©2024. A Texas Corporation.

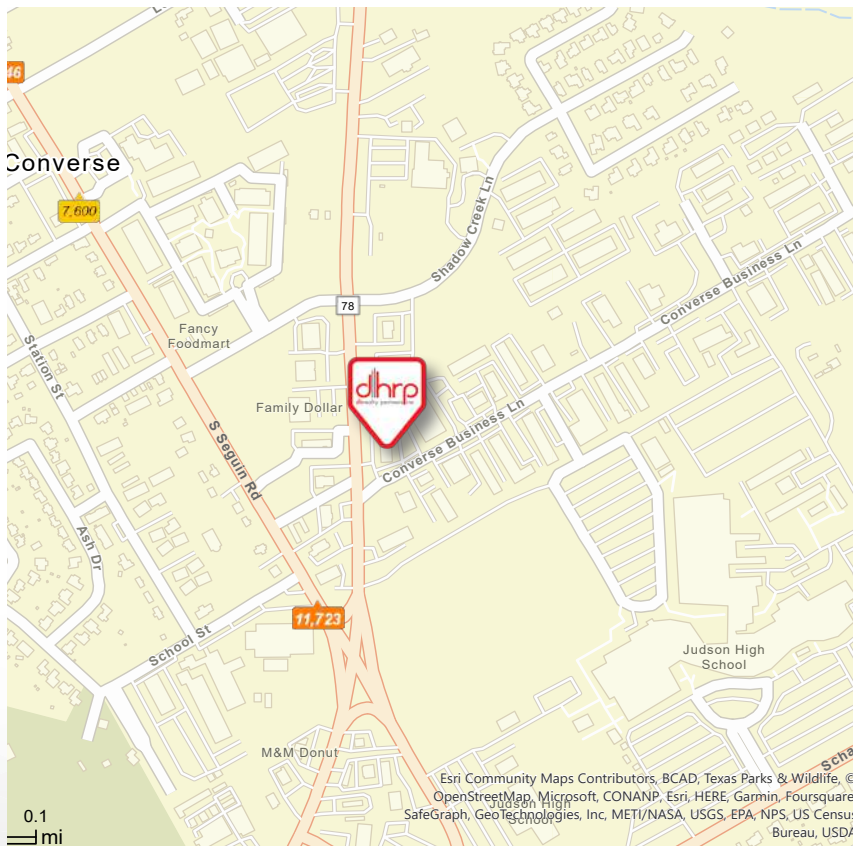
CONVERSE BUSINESS PARK

9150 FM 78 | Converse, TX 78109

**Bulk Warehouse with Fenced Yard - 22,888 SF of Warehouse
with 35,000 SF of Fenced Yard**

LOCATION INFORMATION

TRAFFIC COUNTS



DEMOGRAPHICS

| | 1 Mile | 3 Mile | 5 Mile |
|--------------------------|-----------|-----------|-----------|
| Population | 11,876 | 88,944 | 215,748 |
| Median Age | 32.8 | 34.5 | 35.3 |
| Avg Household Size | 2.9 | 2.9 | 2.8 |
| Median Household Income | \$81,016 | \$80,650 | \$78,386 |
| Average Household Income | \$104,202 | \$102,220 | \$102,805 |

Source: ESRI, 2023

ZONING MAP



The information herein was obtained from sources deemed reliable; however, **DH Realty Partners, Inc. makes no guarantees, warranties, or representations as to the completeness of accuracy thereof. The presentation of this property is submitted subject to errors, omissions, changes of price, prior to sale or lease, or withdrawal without notice.** All Floor plans, property lines, areas, and dimensions are approximate and for illustration purposes only. DHRP | DH Realty Partners, Inc. ©2024. A Texas Corporation.

CONVERSE BUSINESS PARK

9150 FM 78 | Converse, TX 78109

**Bulk Warehouse with Fenced Yard - 22,888 SF of Warehouse
with 35,000 SF of Fenced Yard**

CONVERSE MARKET OVERVIEW



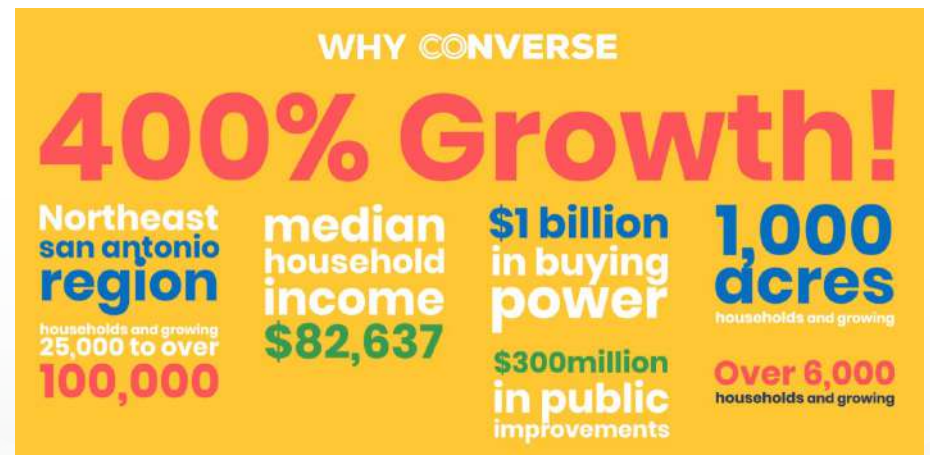
HIGHLIGHTS

- An area of New Commercial Development
- Close proximity to Randolph AFB
- Rapidly Growing Workforce
- Projected 100,000+ population in 2032

GROWTH

- Converse is growing from 7 square miles to 22 square miles
- Population has increased by 7% year-over-year
 - 2017 - 18,000 population
 - 2021 - Over 30,000 population

1000
DEVELOPABLE ACRES
\$1 BILLION
BUYING POWER
\$100 MILLION
IN PUBLIC IMPROVEMENTS



Source: City Of Converse, 2022

The information herein was obtained from sources deemed reliable; however, DH Realty Partners, Inc. makes no guarantees, warranties, or representations as to the completeness of accuracy thereof. The presentation of this property is submitted subject to errors, omissions, changes of price, prior to sale or lease, or withdrawal without notice. All Floor plans, property lines, areas, and dimensions are approximate and for illustration purposes only. DHRP | DH Realty Partners, Inc. ©2024. A Texas Corporation.

HAZARDOUS MATERIAL DISCLOSURE

Every purchaser, seller, landlord and/or tenant of any interest in real property ("Property") is notified that prior or current uses of the Property or adjacent properties may have resulted in hazardous or undesirable materials being located on the Property. These materials may not be visible or easily detected. Current or future laws may require removal or clean-up of areas containing these materials. In order to determine if hazardous or undesirable materials are present on the Property, expert inspections are necessary and removal or clean-up of these materials will require the services of experts. Real Estate Agents are not qualified experts.

If you are a seller or landlord, it is your responsibility to ensure that the transaction documents include disclosures and/or disclaimers that are appropriate for the transaction and the Property.

If you are a purchaser or tenant, it is your responsibility to ensure that the transaction documents include provisions to permit consultation with attorneys, environmental consultants and others to make prudent investigations, and further that such inspections are conducted.

ADA DISCLOSURE

In order to ensure that all business establishments are accessible to persons with a variety of disabilities, the Americans with Disabilities Act was enacted under federal law and there are also state and local laws that may require alterations to a Property in order to allow access. Texas has enacted the Architectural Barriers Removal Act to also accommodate persons with disabilities. Real Estate Agents are not qualified to advise you if the Property complies with these laws or what changes may be necessary. You should consult with attorneys, engineers and other experts to determine if the Property is in compliance with these laws.

FLOOD PLAIN INFORMATION DISCLOSURE

It is the sole responsibility of every purchaser, seller, landlord and/or tenant of any interest in Property to independently review the appropriate flood plain designation maps proposed and adopted by federal, state, and local resources including, but not limited to, the Federal Emergency Management Association ("FEMA") and the San Antonio River Authority ("SARA"), in order to determine the potential flood risk of their Property. Real Estate Agents are not qualified to assess and cannot warrant, guarantee, or make any representations about the flood risk of a particular piece of Property. All decisions made or actions taken or not taken by a purchaser, seller, landlord and/or tenant with respect to the flood risk of a particular piece of Property shall be the sole responsibility of such party.

The information herein was obtained from sources deemed reliable; however, DH Realty Partners, Inc. makes no guarantees, warranties, or representations as to the completeness of accuracy thereof. The presentation of this property is submitted subject to errors, omissions, changes of price, prior to sale or lease, or withdrawal without notice. All Floor plans, property lines, areas, and dimensions are approximate and for illustration purposes only. DHRP | DH Realty Partners, Inc. ©2024. A Texas Corporation.

Information About Brokerage Services

11/2/2015



Information About Brokerage Services

Texas law requires all real estate licensees to give the following information about brokerage services to prospective buyers, tenants, sellers and landlords.

TYPES OF REAL ESTATE LICENSE HOLDERS:

- **A BROKER** is responsible for all brokerage activities, including acts performed by sales agents sponsored by the broker.
- **A SALES AGENT** must be sponsored by a broker and works with clients on behalf of the broker.

A BROKER'S MINIMUM DUTIES REQUIRED BY LAW (A client is the person or party that the broker represents):

- Put the interests of the client above all others, including the broker's own interests;
- Inform the client of any material information about the property or transaction received by the broker;
- Answer the client's questions and present any offer to or counter-offer from the client; and
- Treat all parties to a real estate transaction honestly and fairly.

A LICENSE HOLDER CAN REPRESENT A PARTY IN A REAL ESTATE TRANSACTION:

AS AGENT FOR OWNER (SELLER/LANDLORD): The broker becomes the property owner's agent through an agreement with the owner, usually in a written listing to sell or property management agreement. An owner's agent must perform the broker's minimum duties above and must inform the owner of any material information about the property or transaction known by the agent, including information disclosed to the agent or subagent by the buyer or buyer's agent.

AS AGENT FOR BUYER/TENANT: The broker becomes the buyer/tenant's agent by agreeing to represent the buyer, usually through a written representation agreement. A buyer's agent must perform the broker's minimum duties above and must inform the buyer of any material information about the property or transaction known by the agent, including information disclosed to the agent by the seller or seller's agent.

AS AGENT FOR BOTH - INTERMEDIARY: To act as an intermediary between the parties the broker must first obtain the written agreement of each party to the transaction. The written agreement must state who will pay the broker and, in conspicuous bold or underlined print, set forth the broker's obligations as an intermediary. A broker who acts as an intermediary:

- Must treat all parties to the transaction impartially and fairly;
- May, with the parties' written consent, appoint a different license holder associated with the broker to each party (owner and buyer) to communicate with, provide opinions and advice to, and carry out the instructions of each party to the transaction.
- Must not, unless specifically authorized in writing to do so by the party, disclose:
 - that the owner will accept a price less than the written asking price;
 - that the buyer/tenant will pay a price greater than the price submitted in a written offer; and
 - any confidential information or any other information that a party specifically instructs the broker in writing not to disclose, unless required to do so by law.

AS SUBAGENT: A license holder acts as a subagent when aiding a buyer in a transaction without an agreement to represent the buyer. A subagent can assist the buyer but does not represent the buyer and must place the interests of the owner first.

TO AVOID DISPUTES, ALL AGREEMENTS BETWEEN YOU AND A BROKER SHOULD BE IN WRITING AND CLEARLY ESTABLISH:

- The broker's duties and responsibilities to you, and your obligations under the representation agreement.
- Who will pay the broker for services provided to you, when payment will be made and how the payment will be calculated.

LICENSE HOLDER CONTACT INFORMATION: This notice is being provided for information purposes. It does not create an obligation for you to use the broker's services. Please acknowledge receipt of this notice below and retain a copy for your records.

| | | | |
|---|---------------|-----------------------|----------------------|
| DH Realty Partners, Inc. | 147342 | www.dhrp.us | (210)222-2424 |
| Licensed Broker /Broker Firm Name or Primary Assumed Business Name | License No. | Email | Phone |
| Harold Alexander Yount, Jr. | 308749 | ayount@dhrp.us | (210)222-2424 |
| Designated Broker of Firm | License No. | Email | Phone |
| Michael D. Hoover | 391636 | hoover@dhrp.us | (210)222-2424 |
| Licensed Supervisor of Sales Agent/ Associate | License No. | Email | Phone |
| Michael D. Hoover | 391636 | hoover@dhrp.us | (210)222-2424 |
| Sales Agent/Associate's Name | License No. | Email | Phone |

Buyer/Tenant/Seller/Landlord Initials

Date

Regulated by the Texas Real Estate Commission

TXR-2501

DH Realty Partners, Inc, 801 N Saint Marys St San Antonio, TX 78205

Information available at www.trec.texas.gov

IABS 1-0 Date

Phone: (210)222-2424 Fax: (210)271-0183

Unfilled

Produced with Lone Wolf Transactions (zipForm Edition) 717 N Harwood St, Suite 2200, Dallas, TX 75201 www.lwdf.com